

Friedrich GITTERLE



Friedrich Gitterle, born 1968 in Tyrol, Austria is founder, shareholder and CEO of „AnschlussBahnProfis“. A company focusing on the optimisation of first and last mile in rail transport, based in Pfaffenhofen/Ilm (Bavaria). He used to work for a number of international logistics and railway consulting companies in Germany and Austria after obtained a degree in Business Studies at the University of Innsbruck.



SEAMLESS TRANSPORT CHAINS THROUGH HARMONISATION

Success Stories and Global Perspectives for Rail Freight

Last mile in rail transport.
More than just tracks



GRFC 2014 VIENNA

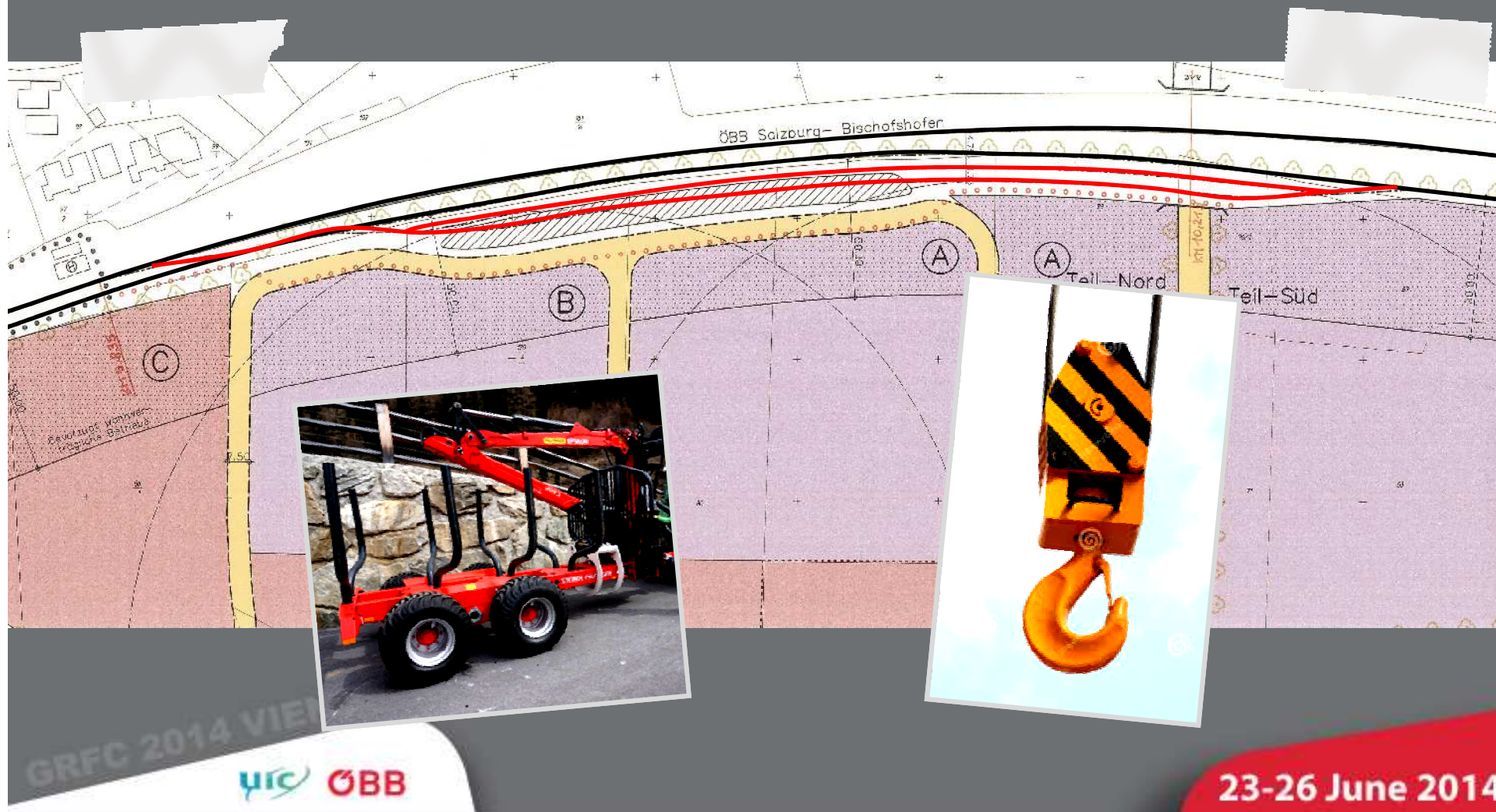


23-26 June 2014

Rail sidings for everyone?



Attracting „wrong“ companies



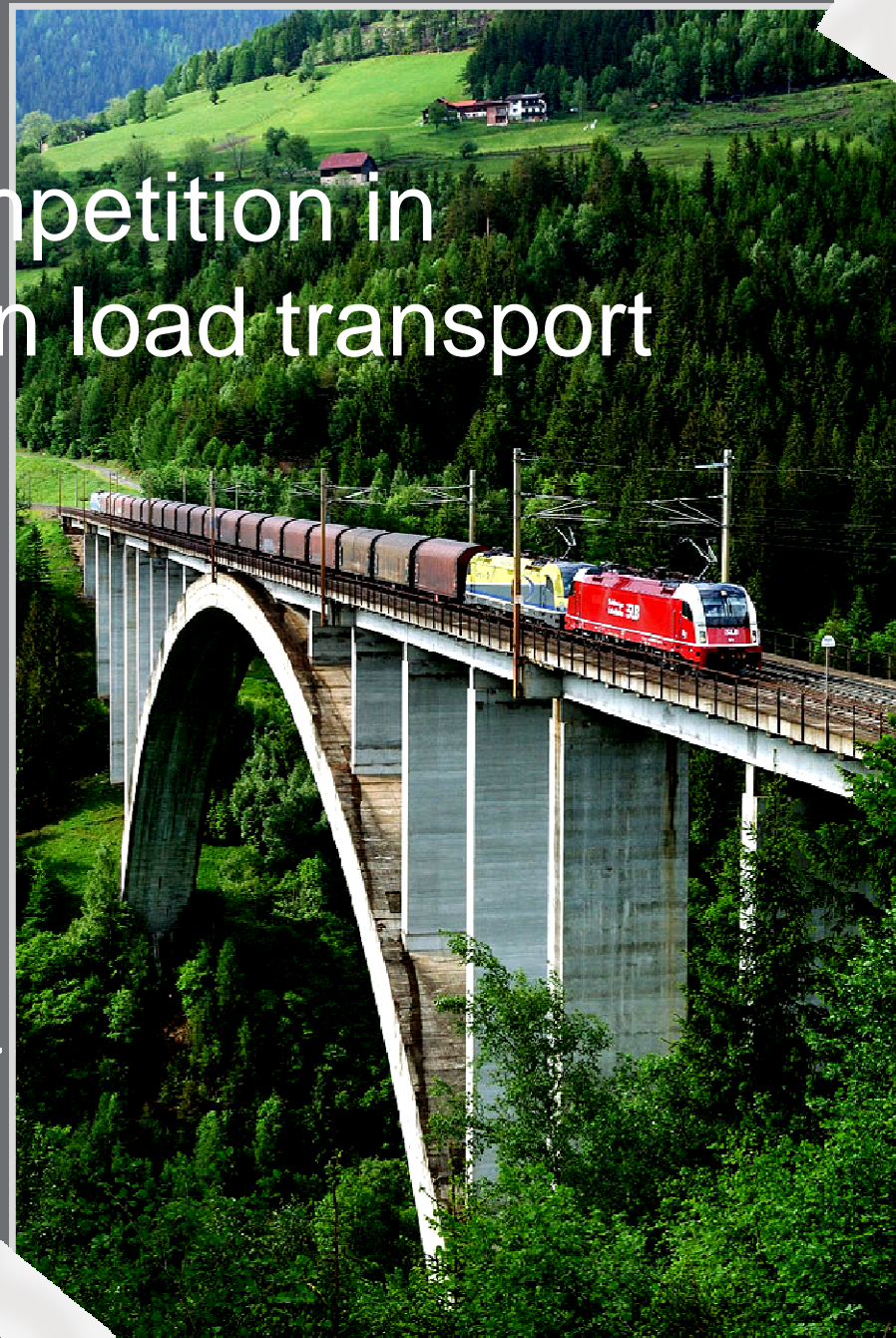
23-26 June 2014

Ignoring rail operation



- Every 15 minutes passenger train
- Limited capacity at railway station
- Operation time
1.00 a.m. – 4.00 a.m.

No competition in single wagon load transport



How to waste money and miss opportunities

- No Masterplan
- Tracks only
- Rail siding at any business park/industrial zone
- Ignoring market situation:
single wagon load transport



Best practice: „SANSIBAS“

- Analysis of business parks/industrial zones
- Border-crossing masterplan
- Corridors will be left clear for railway
- Matching rail sidings with potential users

